

2025-2026

GREAT LAKES SCIENCE CENTER

Educator Guide



**Book
your field trip,
workshop or
school outreach
experience
today!**

Our Corporate And Foundation Supporters

1Million+



500K+



100K+



Jack, Joseph and Morton Mandel Supporting Foundation



The Nancy Andrews Family Foundation

TIMKEN

50K+

Anonymous



Thomas F. Peterson Charitable Trust



25K+



Bruening



David and Inez Myers Foundation of the Jewish Federation



MOEN



Tuition Trust Authority



SHERWIN-WILLIAMS

Swagelok



The Malcolm E. Kenney Foundation

The Oatey Foundation



15K+



The Park Foundation



The Joan P. Wenk Charitable Fund

10K+

ABARTA Coca-Cola Beverages, LLC • Anonymous (2) • ARES Corporation • Calfee, Halter & Griswold LLP • Dorn Family Foundation • Eaton • Lakeside Facility Services • Montrose Kia • Nordson Corporate Foundation • Olympic Steel, Inc. • O'Neill Brothers Foundation • RPM International Inc. • Society for Information Management (Cleveland Chapter) • The Huntington National Bank • The Kaulig Foundation • The Labcorp Charitable Foundation • The Louise H. & David S. Ingalls Foundation • The Murch Foundation • The Pentair Foundation • The Stocker Foundation

5K+

ABM Parking Services • BakerHostetler • Discount Drug Mart • Drake Construction Company • Enbridge Gas Ohio • FIRST • Great Lakes Brewing Company Héroux-Devtek, Inc. • Lakeside Facility Services • Montrose Kia • Nordson Corporate Foundation • Olympic Steel, Inc. • O'Neill Brothers Foundation • RPM International Inc. • Society for Information Management (Cleveland Chapter) • The Huntington National Bank • The Kaulig Foundation • The Labcorp Charitable Foundation • The Louise H. & David S. Ingalls Foundation • The Murch Foundation • The Pentair Foundation • The Stocker Foundation

Great Lakes Science Center thanks its supporters from fiscal year 2024.

Welcome Back, Educators!

Dear Educators,

With the start of another school year nearly here, we are excited to welcome area students back to Great Lakes Science Center for field trips and tours. We have made a few changes to better serve educators while igniting a passion for STEM with engaging experiences designed for students of all ages.

Our goal is to inspire the next generation of scientists, engineers and innovators. Our STEM workshops are designed to complement and enhance the science curriculum taught in the classroom, providing hands-on activities and real-world applications that engage students in STEM subjects in a meaningful way. Covering a range of topics – robotics, engineering, biology and environmental science – each workshop is led by experienced educators and designed to meet educational standards while sparking curiosity and creativity in your students.

This October we will open a brand-new temporary exhibit, Superhuman: Power of Technology, which explores the inventive industrial and medical breakthroughs that have helped enhance the human experience. From October 28, 2025 through April 30, 2026, your visit to the Science Center will include access to this special exhibit as well as the Cleveland Creates Gallery, the NASA Glenn Visitor Center and so much more.

Not possible to bring your students to the Science Center? Don't worry, we also offer an outreach program to bring our STEM experience to your school. This includes live science shows and hands-on workshops tailored to meet the state's curriculum standards.

Please reach out with any questions you might have or to discuss customized programs for your specific needs. We look forward to welcoming you and your students to the Science Center soon!

Stay Curious,
Brett Nicholas
Vice President of Education
Great Lakes Science Center



Content Standards

for Workshops and Science Shows

Program Type	Grade Band	Program	Inquiry	Earth & Space Science	Physical Science	Life Science	Technology/Engineering Design Process	Math	English/Language Arts	Social Studies
Hands-on Workshops	Pre-K	Engineering Challenge: Three Little Pigs	x		x		x	x	x	x
	1st-2nd	States of Matter: Ice Cream Science	x		x					
		Dissection: Owl Pellets	x			x				
		Engineering Challenge: Skyscrapers	x		x					
	3rd-5th	Engineering Challenge: Rescue Mission	x		x		x	x		x
		DNA Investigation Lab	x			x	x	x	x	x
		Jumping Jitterbugs	x		x					
		Dissection: Cow Eye	x			x	x			
	6th-12th	Electricity Investigators	x		x		x			
		Dissection: Pig Heart	x			x				
		CryptoQuest	x				x			
Big Science Shows	PreK-2	Bubblemania	x		x			x		
	Pre-K - 12th	Fire and Ice	x		x					
		Magic of Matter	x		x					
		Math in Space	x	x	x			x		

Workshops For Field Trips or Outreach

All inquiry-based workshops are 45-60 minute lessons led by an experienced Science Center facilitator that provide hands-on opportunities for your students to explore science and engineering concepts and practices with high quality materials. Workshops can be booked as part of a field trip to the Science Center or as outreach to your school.

Pricing

Workshops have a fixed price as noted below with a maximum of 30 participants unless otherwise specified in the descriptions. Groups larger than 30 will need to be split into multiple workshops.

Workshops delivered as part of field trip to the Science Center: \$200

Workshops delivered at your school or community organization: \$275

Extended Mileage Fee

Outreach locations up to 40 miles from the Science Center are included in the program fee. A fee of \$2 per mile will be charged for locations beyond the 40 mile limit up to 120 miles away from the Science Center. For locations beyond the 120 mile standard limit, please call to make accommodations.

Pre-K/Kindergarten

Engineering Challenge: The Three Little Pigs

Students listen to this classic story and become engineers as they perform hands-on experiments exploring what materials can withstand the big, bad wolf. Duration 30 minutes.

Grades 1-2

States of Matter: Ice Cream Science

Can we turn hot chocolate into ice cream? Explore the properties of solids, liquids and gases in this tasty experience. Students with dairy/chocolate allergies will be offered an alternative treat. Duration 45 - 60 minutes.

Dissection: Owl Pellets

Students dissect an owl pellet to learn about owl biology, use a chart to identify what they find and discuss what it tells them about the owl's diet and habitat. Duration 45 - 60 minutes. **Added material fee: \$25**

Engineering Challenge: Skyscrapers

Students practice engineering skills when they are challenged to build a tower out of simple paper that can hold weight. Duration 45 - 60 minutes.

Hands-On Workshops for Field Trips or Outreach

Descriptions

Grades 3-5

Engineering Challenge: Rescue Mission

Students work in small groups using the engineering design process to build a trampoline capable of launching supplies over a "raging river" to a town in need. They also practice budgeting skills to buy extra materials to complete their mission. Duration 45 - 60 minutes.

DNA Investigations Lab

Students participate in fun challenges while investigating what makes up their DNA and where it is found. The workshop culminates with the extraction and viewing of their own DNA in a test tube. Duration 45 - 60 minutes.

Jumping Jitterbugs

Students explore how circuits and electricity work together while designing and creating their own Jumping Jitterbug "bot" to take home, and discuss renewable and non-renewable energy sources. Duration 45 - 60 minutes. **Added material fee: \$50**

Dissection: Cow Eye

Students will examine the complex structure of an eye and how it functions by cutting into and dissecting a cow eye. Duration 45 - 60 minutes. **Added material fee: \$50**

Note: Reservations for this program must be made at least four weeks in advance.



Grades 6-12

Electricity Investigators

Students investigate circuits and electricity as they use the engineering design process to design and create their own working flashlights from common items. Then they will use their flashlight to solve an escape room challenge. Duration 60 minutes.

Dissection: Pig Heart

Students will get a tour of the body's pump with this dissection of a pig heart. They will cut into the heart to reveal the four chambers, peer into the aorta and inspect blood vessels up close. Duration 60 minutes. **Added material fee: \$100**

Note: Reservations for this program must be made at least four weeks in advance.

CryptoQuest

Students will learn how encryption can keep information safe and use iPads to scan a series of QR codes while racing to solve a series of puzzles revealing a hidden message. Duration 60 minutes.

Check out
**NASA Mission to
STEM** as an add on
to your field trip at no
additional charge.

See page 12
for details.



Big Science Shows at Your School

In addition to the hands-on outreach workshops that we can bring to your school we are excited to continue offering our Big Science Shows.

Big Science Shows

In addition to the hands-on outreach workshops that we can bring to your school we are excited to continue offering our Big Science Shows.

We bring these larger than life science experiments to your school! With each show, we include time for questions and answers. Choose from the following themes.

Bubblemania – Step into the world of Bubblemania and learn everything there is to know about these soapy spheres. Why are they shaped the way they are, and why do they look the way they do? Your students become “Bubbleologists” and investigate molecules, shapes and colors.

Fire & Ice – Experimentation with temperature is taken to the extreme when we battle fire and liquid nitrogen in an explosive demonstration of physics and chemistry.

Magic of Matter – How can matter change from one state into the other? We experiment with chemistry and liquid nitrogen to uncover the “magic” behind why some materials behave in unexpected ways.

Math in Space – 3-2-1, blast off! Explore the states of human flight outside the Earth's orbit and the mathematics that make it possible.

\$400 per show. Duration: approximately 30-45 minutes.

Please note that a space of at least 20 x 20 feet is required along with a high ceiling. Auditoriums, cafeterias and gymnasiums are usually great spaces.

Outreach Extended Mileage Fee

Outreach locations up to 40 miles from the Science Center are included in the program fee. A fee of \$2 per mile will be charged for locations beyond the 40 mile limit up to 120 miles away from the Science Center. For locations beyond the 120 mile standard limit, please call to make accommodations.



Educator Resources

FREE Admission Every Day for Teachers

Who says kids should have all the fun? The Science Center offers free general admission to Ohio teachers every day. Just bring a copy of your teaching certificate, OEA card, union card or school ID listing teacher/educator and preview the exhibits before your next field trip.

Discounted Family Memberships for Teachers

Discounted memberships are available for teachers, so that you and your family can enjoy admission to the Science Center, NASA Glenn Visitor Center, Steamship Mather and most traveling exhibitions all year round. The benefits of membership also include discounts for our camp programs and free general admission to 360+ reciprocal science centers and museums around the county. Call 216-696-4576 for details.



Stay Curious!

OCTOBER 28, 2025 –
APRIL 30, 2026

Super Human: Power of Technology

What would you do with the ability to control a computer using the power of your mind or enhance your strength by climbing into an exoskeleton? No longer science fiction, new technologies are making it possible to overcome our natural limitations.

Opening October 28, the Science Center's new temporary exhibit Super Human: Power of Technology, explores the inventive and ingenious industrial and medical breakthroughs that have helped enhance the human experience. Created by SciTech and produced by Imagine, Super Human includes both hands-on and full-body experiences. Climb into an exoskeleton, fly a virtual jet pack, race against a Paralympian and discover how a bionic eye works.

Guests are encouraged to think about the potential of technology and how it can impact their experiences with the world.

Super Human is included with general Science Center admission.





Handle With Care

Presented by The Ron and Lydia Harrington Family Foundation.

Opening September 30, 2025, Handle With Care merges empathy with STEM for the Science Center's youngest visitors. Designed for children ages 8 and younger, this brand-new exhibition gallery incorporates STEM learning and fundamental engineering principles, while fostering empathy and creativity through imaginative play.

Entering Handle With Care, guests will have the opportunity to create a care package for a loved one. After assembling their care package, guests can head over to the warehouse where they explore our three-tiered climbing structure, sit in the driver's seat of a scale model forklift, and load their package onto a 10-foot-tall pulley and conveyor belt system. Finally, guests can deliver their care package to an imaginative play neighborhood complete with houses, apartments, and a package delivery truck.

Handle With Care is presented by the Ron and Lydia Harrington Family Foundation, with additional support from the Reinberger Foundation, PNC Foundation, Carol A. Barnak, the Nancy Andrews Foundation, the Joan. P. Wenk Charitable Foundation, Zest Pediatrics, the Stocker Foundation and Medical Mutual.



What to See and Do

NASA Glenn Visitor Center

Great Lakes Science Center is home to one of only 11 NASA Visitor Centers in the United States. The NASA Glenn Visitor Center is one of 30 museums and historic sites on the America 250-Ohio Program Air & Space Trail. Learn more about Ohio's contributions to the space program, see a real Apollo command module up close, learn how astronauts live and work on the International Space Station and explore propulsion, power, materials science and much more.



Mission to STEM

Field trips are moving into the realm of augmented reality at the Science Center. The state-of-the-art Mission to STEM app brings our NASA Glenn Visitor Center to life with virtual and augmented reality. In this interactive digital mission, students virtually climb into the Apollo command module, fire up the rockets, conduct International Space Station experiments and more. Your class will be provided with iPad minis or download the app and bring your own set of devices.

Cleveland Creates Gallery

The Cleveland Creates Gallery presented by Sherwin-Williams, which opened in 2024, was inspired by the innovative spirit of Cleveland. Interactive exhibits invite guests of all ages to dive into the realms of technology, sensors, data and remote robotics, giving them an opportunity to explore the tools and skills that are driving manufacturing advances in Northeast Ohio.

Science Phenomena

Get hands-on with science! Our Science Phenomena Gallery encourages students to observe, investigate, predict and test the principles behind light, sound, motion, weather, electricity and magnetism.

BioMedTech: Engineering for Your Health

Enter the world of biomedical technology and engineering. Students explore interactive exhibits, videos and educational displays focusing on genomics, stem cells, prosthetics, functional electrical stimulations (FES) and medical imaging as they learn about the work being done by local researchers to develop innovative medical technologies. The BioMedTech's nano exhibit engages guests through a series of interactive experiences that make a world we cannot see come alive through real-world applications and small-scale but powerful technologies.

Daily Science Demonstrations

Science comes to life in our spectacular demonstrations. Daily science demonstrations are free with paid general admission. Seating may be limited as all demonstrations are open to the general public and cannot be reserved. You will be notified of the day's times and themes at check-in.

Put a little play in your day!

**Educator Night at the
Science Center, sponsored by
the Ohio Lottery, is returning this
year on Thursday, October 16.
Bring your family for a free
evening at the museum!**



OH!

LOTTERY®

Cleveland Clinic DOME Theater

Add a movie to your field trip!

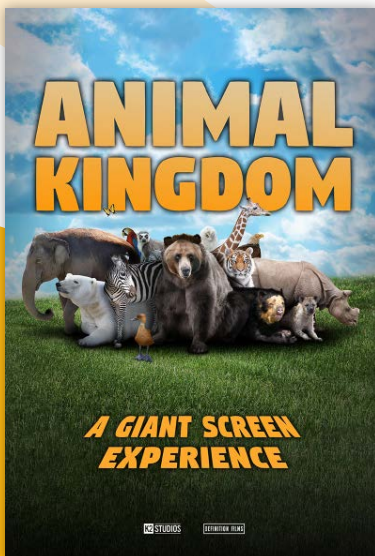
Giant-screen films can inspire STEM careers, bridging the gap between entertainment and science.

Enhance your students' educational experience by adding a film shown in our six-story high domed theater to your visit! Educator guides that include information on national content standards, as well as pre- and post-visit activities, are available for our films. Please visit GreatScience.com and click on "Educators" for more details. Pricing is also available for movie-only field trip experiences.



Or choose from one of these recent favorites!

Sea Lions: Life by a Whisker, Dinosaurs of Antarctica, Tornado Alley, National Parks Adventure, Great Bear Rainforest, Great Barrier Reef, America's Musical Journey or Tiny Giants



Important Information

Pricing and Reservations

1 Field trip pricing

Rates apply to public, private, charter or home school visits of 10 or more people on weekdays during the school year. Advanced reservations and payment are required.

- General admission
\$9 per student
- Admission and DOME Theater
\$12 per student
- DOME Theater only
\$9 per student

'A 6 percent City of Cleveland admissions fee will be added to your visit.

2 Add a hands-on workshop

Enhance your field trip with a hands-on workshop. All workshops are specifically designed to support Ohio's Learning Standards in science, math, literacy and social studies. See page 4 for more information.

Book Your Experience

Save time by registering via email or through our website! Email us at edhelp@glsc.org or register at GreatScience.com and click Educators>Plan a Field Trip.

Please have the following information when registering:

- Full contact information
- School name and grade level
- Preferred visit date
- Arrival and departure times
- Number of students and chaperones
- If you need a time to eat lunch

Title I School Admission

Ohio schools who receive federal Title 1 services are entitled to free general admission to the Science Center as part of a field trip. Status is subject to confirmation.

With support from Parker Hannifin Foundation.

Payment and Cancellation

Payment is due 14 days prior to the visit or program date. Payments are non-refundable and payments made toward a canceled visit will be held as a credit toward a future visit.

Chaperones

One adult for every five students is required. Chaperones within the one-to-five ratios will receive free admission. Additional adults must pay the posted student rate.

Lunch Options

A space to eat lunch is available on a first-come, first-serve basis. Schools can bring brown-bag lunches or pre-order boxed lunches. All pre-ordered lunches must be confirmed and paid for at least seven business days before your visit.

Bus Parking

Complimentary bus parking is also available on a first-come, first-serve basis. Buses will receive instructions on where and how to park upon arrival.



Visit our website for detailed field trip policies.



Great Lakes Museum of Science, Environment, and Technology
601 Eriesside Ave Cleveland, OH 44114
GreatScience.com



Non-Profit
Organization
U.S. Postage
PAID
Cleveland, OH
Permit No. 2260